

Four Fundamental Values of NIX.

C Challenging

"NIX is always with us."
"NIX never turns back, no matter how hard the challenge is."
The challenge for NIX is to meet the expectations expressed by those comments.

O Original

"NIX will bring something new."
"We are waiting for creative products that meet the needs of industry."
NIX responds to the encouragement with products full of new ideas.

S Speedy

"NIX responds by the next day, whenever and whatever the trouble is."
"NIX sells products and provides after-sales service."
These are the evaluations we seek with our fast, accurate service.

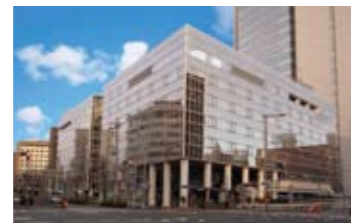
Q High Quality

"We can count on NIX."
"We can rely on NIX quality."
Customer satisfaction drives us to seek further improvements in quality and features.

A complete proprietary system from development and design to production.
NIX's one-stop solution for customers.



Headquarters



Nagoya Office



Osaka Office



R&D center research-and-development



Global Production Management HQ



NIX OF AMERICA



NIX OF HONG KONG LIMITED



NIX OF ZHUHAI PRECISION PRODUCTS LIMITED



NIX OF SHANGHAI LIMITED



NIX (THAILAND) LTD.

NIX, INC.

Global Production Management Headquarters

2-23-3 Nishihashimoto, Midori-ku, Sagami-hara, Kanagawa prefecture 252-0131, Japan
Tel: +81-42-779-9129 Fax: +81-42-773-9963

Headquarters

2-3-3 Minatomirai, Nishi-ku, Yokohama 220-6108, Japan
Tel: +81-45-221-2001 Fax: +81-45-221-1230

Nagoya Office

6F No.2 Chigusa Bldg., 3-chome 15-31 Aoi, Higashi-ku, Nagoya-shi,
Aichi prefecture 461-0004, Japan
Tel: +81-52-937-7301 Fax: +81-52-937-7319

Osaka Office

4F No.2 Astro Shin-Osaka Bldg., 6-1-3 Nishinakajima, Yodogawa-ku, Osaka-shi 532-0011, Japan
Tel: +81-6-6305-0451 Fax: +81-6-6308-4776

NIX OF AMERICA

2055, Junction Ave, Suite 230, San Jose, CA 95131
Tel: +1-408-321-8286 Fax: +1-408-428-9376

NIX OF HONG KONG LIMITED

Fat C, 20/F, Young Ya Ind. Bldg., 381-389 Sha Tsui Road, Tsuen Wan, New Territories, Hong Kong
Tel: +852-3428-8309 Fax: +852-3428-8319

NIX OF ZHUHAI PRECISION PRODUCTS LIMITED

Yashi Electronics Factory #3, Liangang Industrial Park, Hongqi Town, Zhuhai,
Guangdong Province, China

NIX OF SHANGHAI LIMITED

Room 2715, Block B, Zhenhua Enterprise Plaza, No. 3261 Dongfang Road, Pudong, Shanghai, China
Tel: +86-21-5018-7680 Fax: +86-21-5017-3295

NIX (THAILAND) LTD.

13th Floor, BB Building, 54 Sukhumvit 21 Road, Klongtoey-Nua, Wattana, Bangkok 10110 Thailand
Tel: +66-2-261-3931 Fax: +66-2-261-3932

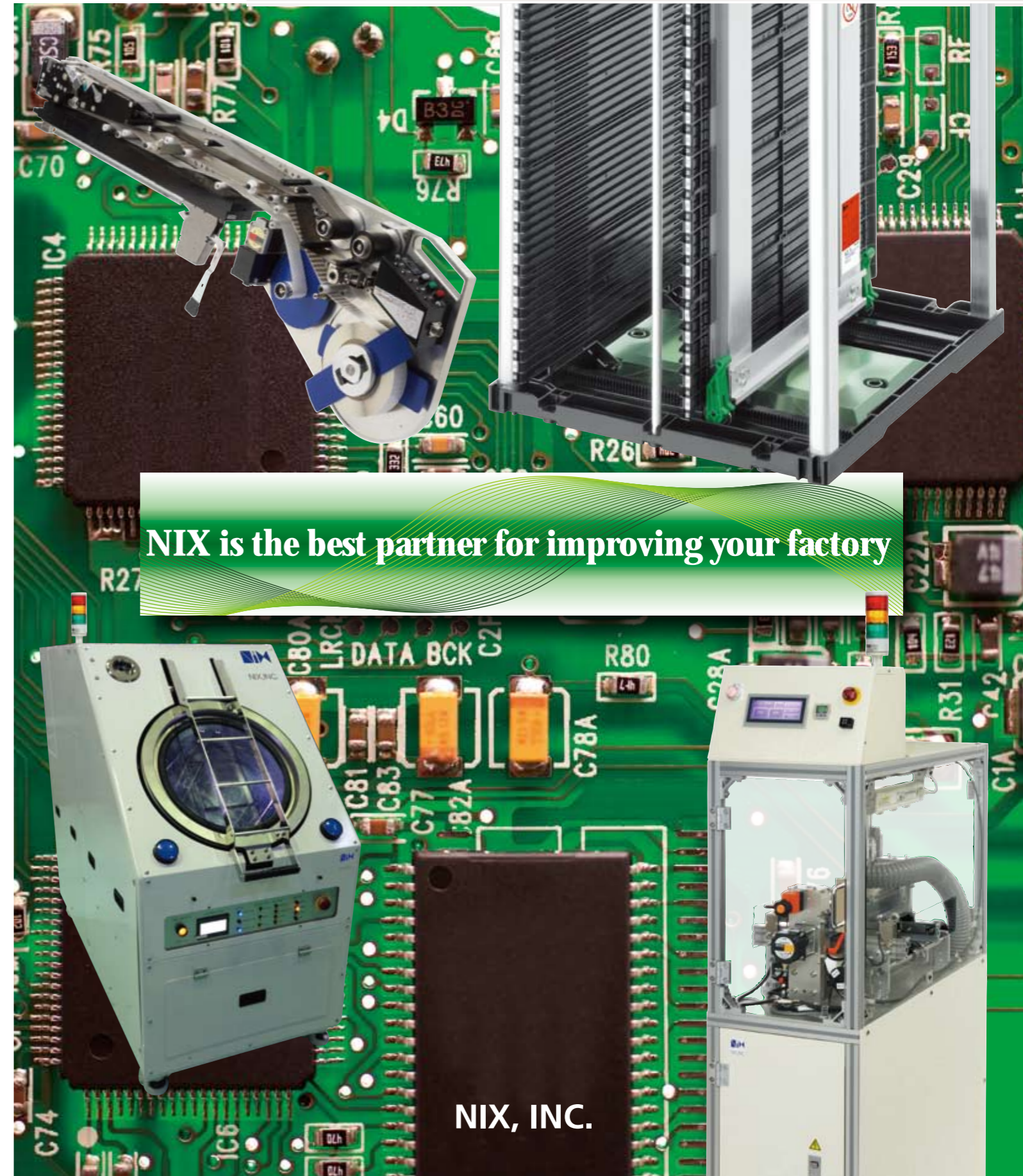
<http://www.nix.co.jp>

The website automatic labeling.
NAVI is now available for focused expertise in printed board traceability.
<http://www.labelnix.com>



NIX, INC.

NIX PCB SOLUTION GUIDE



NIX is the best partner for improving your factory

NIX, INC.

Traceability solutions with NIX's unique products and systems.

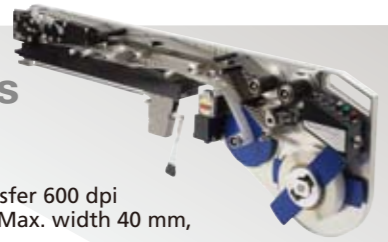
Auto labelling website.
 "NAVI" is now available for focused on the printed board traceability.
<http://www.labelnix.com>

Label Feeder for Moulder



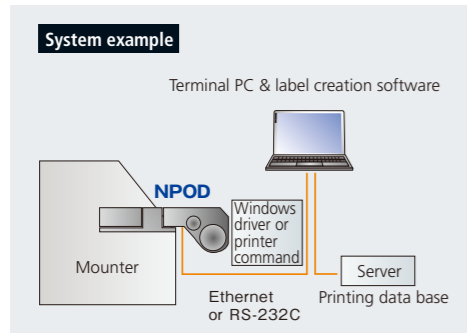
Reducing process time and labor cost by changing label manual attaching to automated attaching. Label can be attached automatically using existing moulder. High speed/high accuracy attaching is available with moulder function. Advantage of less expensive/space saving comparing to dedicated label attaching system. Label feeder consists of two types of NPOD series (with printing feature) and AMP series (without printing feature)

Feeder with printing function NPOD series



- [Printer specification]**
- Model : NPOD
 - Printing Type : thermal transfer 600 dpi
 - Maximum Printing Range : Max. width 40 mm, Max. height 30 mm
 - Communication I/F : Selectable either Ethernet or RS-232C
 - WindowsXP, Vista, 7 (32-, 64-bit) with printer driver
 - With printer built-in command and front (available to create custom software)
 - With external input/output connector (DSUB-15 pin)

- [Label & ribbon specification]**
- Label Shape Type : punch shape horizontal single face label (N/A for continuous forms)
 - Label Size : Width 4 to 40 mm, length 4 to 30 mm
 - Label Mat Width : 10 to 45 mm
 - Label Roll Size : Max. outer diameter 200 mm, core inner diameter 76.2 mm
 - Applicable Label : NIX STATINIX static charge countermeasure polyimide
 - Applicable Ribbon : Max. ribbon width 50 mm x 300 m (DK620 series)

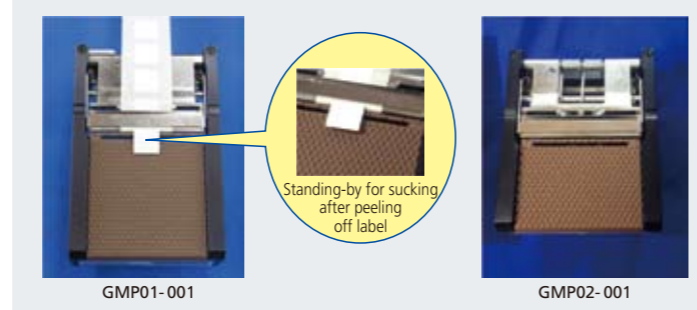


Feeder without printing function AMP series



- [Specification]**
- Model : AMP
 - Label Shape : Punch shape horizontal single face or multiple column (N/A for continuous forms)
 - Label Size : Width 3 to 38 mm, length 3 to 50 mm
 - *Depending on moulder model and sheet left/right margin
 - Label Feed Rate : Selectable from 30, 53, 95 mm/sec
 - Label Peel-off Unit : Requiring GMP module 1/AMP 1
 - *GMP module consists of two types
 - Power Supply : In use with direct connector connection from moulder
 - *Separate power supply is required depending on model of moulder
 - Please contact us for detail

Detachable GMP label peel-off module Easily adjustable for various label size



Dedicated model for real time printing label attaching

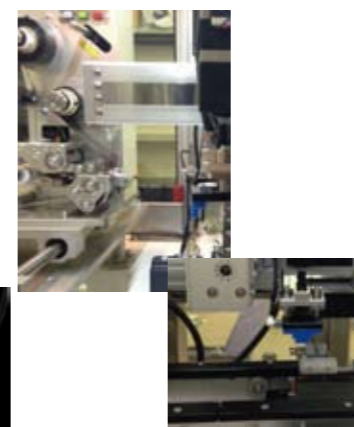
Dedicated model for label attaching capable of traceability from the top of mounting line (custom specification). Attaching position can be changed by either one of two types, manual type/automated type. *Loader and unloader before and after label attaching system are available.

LM series



Attaching position XY manual

L series



Attaching position XY auto

- Thermal transfer printer ; 300 or 600dpi mounted
- Available to attach after verifying legibility after printing (LM type verifies after attaching)
- Compact/space saving with 2 inches head mounted
- Two types of auto setting/manual setting for attaching position
- Attaching angle is settable in every 90 degrees
- Minimum height of label is 4 mm or more
- Custom specification available

Specifications				
Model	TPR-612LM	TPR-612L	TPR-624LM	TPR-624L
Printing Resolution	300dpi	300dpi	600dpi	600dpi
Maximum Printing Width	53.33mm	53.33mm	58mm	58mm
Base Sheet Width	20 - 65mm			
Minimum Label Height	4mm or more			
Ribbon Width	30 - 64mm			
Communication I/F	RS-232C			
Bar Code Reader for Verification	Keyence SR-510 *Other readers are compatible			
Built-in Character	JIS level-1 kanji set, level-2 kanji set, ANK character, etc			
Built-in Bar Code	2-dimension QR, micro QR, PDF417, micro PDF417, DataMatrix (ECC200)			
	1-dimension Code39, JAN, UPC, NW7, ITF, Code128, EAN128 (GS1-128)			
Attaching Position	XY manual	XY auto	XY manual	XY auto
Attaching Angle	Fix	Every 90 degrees auto	Fix	Every 90 degrees auto
Attaching Position Specifying Registration Method	—	PC or touch panel	—	PC or touch panel

*Including two types of in-line and batch
 *Printing and control software will be a custom application based on agreement

Printers, label drawing software

High Performance Printer BBP16E



Main specifications

Model	BBP16E	BBP16E (with cutter)	BBP16E (with peel)
Print Resolution	600 dpi	600 dpi	600 dpi
Print Head Width	104 mm	104 mm	104 mm
Max. Base Sheet Width (narrow specification)	15 - 90 mm	15 - 90 mm	15 - 90 mm
Max. Base Sheet Width (wide specification)	25.4 - 113 mm	25.4 - 113 mm	25.4 - 113 mm
Label Length	4 - 2,540 mm	18 - 1,016 mm	25.4 - 152.4 mm
Gap Length between Labels	Min. 2 mm	Min. 2 mm	Min. 2 mm

- High performance fine printing is available with 600 dpi printing head mounted
- Minimum height of label is 4 mm or more
- Label drawing software CODESOFT compatible
- Easy generation of 2-dimensional code such as QR code
- With Windows Vista, Windows7, 8, 8.1, 10 compatible printer drivers

CODESOFT

Low cost, Compact Printer BBP12



- Low cost and compact thermal transfer printer.
- Available to carry-on with light weight (2.3kg)
- 300 dpi printing head mounted
- Special discounted price available with set purchasing with Label drawing software CODESOFT.
- With Windows Vista, Windows7, 8, 8.1, 10 compatible printer drivers

Main specifications

Model	BBP12
Print Resolution	300dpi
Max. Base Sheet Width	118mm
Max. Print Width	105.6mm
Min. Label Length	10mm (Please contact us for less than it)
Max. Label Outer Diameter	127mm (203.2mm when using external holder)

CODESOFT

Label for thermal transfer printer

Heat-resistant proof polyimide label (before re-flow)



Base Material Type Code	Color	Applicable Temperature (5 minutes)	Label Total Thickness
STATINIX	Matte white	-70°C - 260°C	0.094 mm
B728	Matte white	-70°C - 260°C	0.111 mm
B416	Gloss white	-70°C - 230°C *	0.076 mm
B729	Matte white	-70°C - 260°C	0.086 mm
B724	Matte amber	-70°C - 280°C	0.111 mm

*Applicable temperatures will be up to 270°C in the case of 80 seconds.

Heat endurance test



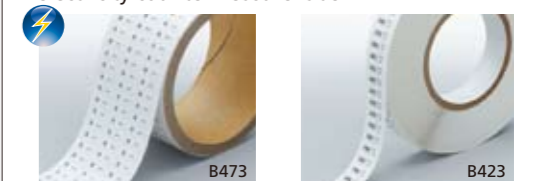
Polyimide STATINIX
 Top: Pre-reflow
 Bottom: Post-reflow; No change



Polyester B423
 Top: Pre-reflow
 Bottom: Post-reflow; Shrunk

Non heat-resistant proof label (post reflow)

Labels are most suitable for attaching after reflow. Labels in accordance with application are available to recommend such as static electricity countermeasure label.



Base Material Type Code	Applicable Temperature (30 days)	Label Total Thickness
B473	-40°C - 120°C	0.087 mm
B423	-70°C - 110°C	0.076 mm
B459	-40°C - 100°C	0.079 mm

Moulder Manufacturers	Moulder Model Name	Label Feeder Model Name with Printing Function	Label Feeder Model Name without Printing Function	GMP Module Compatible		
				GMP01-001 *Note 1	GMP02-001 *Note 2	LMG *Note 3
JUKI	KE700/1000/2000/3000 (mechanical feeder model)	—	AMPJ01-001	△	○	○
	FX series, KE3000 (electrical feeder model)	—	AMPJF01-001	△	○	○
Fuji Machine MFG	NXT, NXT II, AIM, AIMEX, XPF	NPOD-NXT	AMPFN02-001	△	○	○
	NXT, NXT II, AIM, AIMEX, XPF	NPOD-NXT	AMPFN02-002 *With reel holder	△	○	○
	QP2, QP3, XP	NPOD-F	AMPF01-001	×	○	○
Yamaha	IP	—	AMPF01-001	×	×	○
	YV100, XG100, YG100/88	—	AMPY01-001	×	○	○
Panasonic	YS12, YS12F, YS24X, YS88, YS100, YSM-40	—	AMPYS01-001	×	○	○
	CM402, 602, 212, 101, DT401, CM212, NPM	NPOD-CM	AMPCC02-001	24 to 44 mm length label only	3 to 14 mm length label only	○
	MPAV2, MPAG3, MSF, MCF, BM	—	AMPPO2-001	×	○	○

*Note 1. Applicable label size for GMP01-001: Label base sheet width 3 to 42 mm, label length 3 to 50 mm (24 to 44 mm for AMPCC02-001) *Note 2. Applicable label size for GMP02-001: Label base sheet width 3 to 42 mm, label length 3 to 35 mm (3 to 14 mm for AMPCC02-001) *Note 3. LMG is custom module for size to which GMP01 or 02 is not compatible. △: Please contact us for detail.